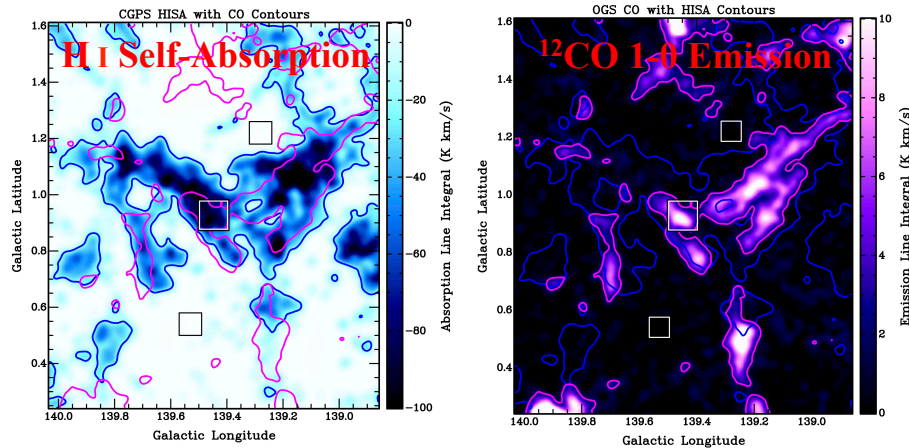
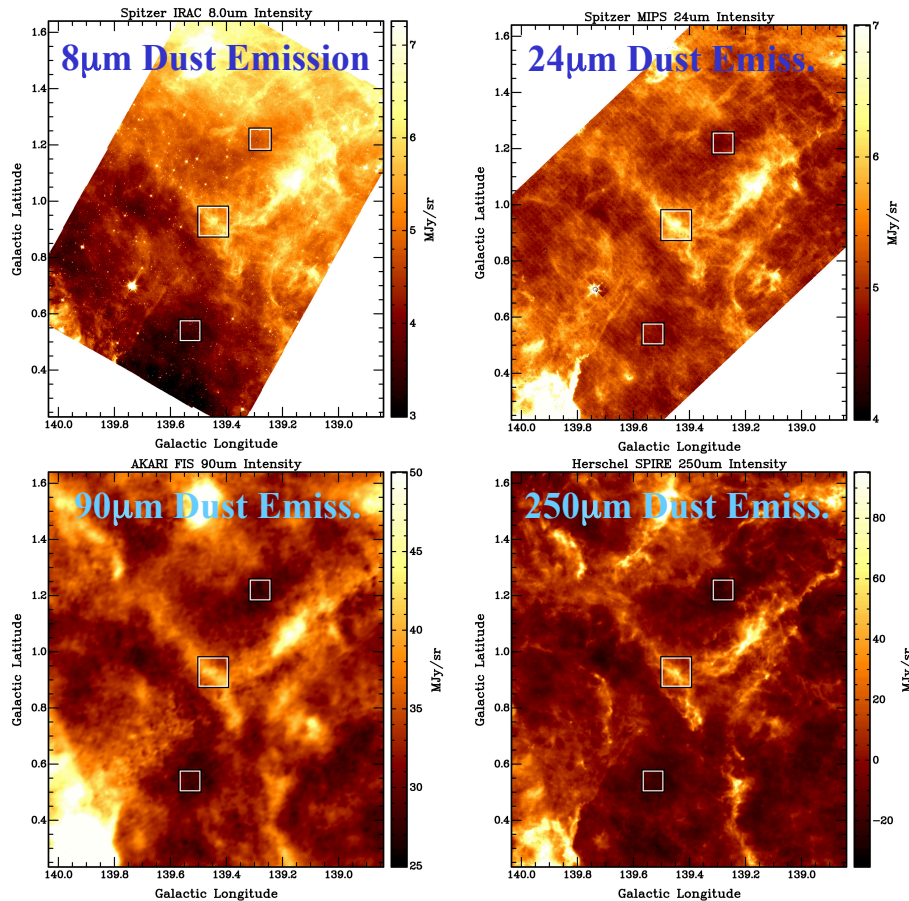


Exploring the Dust Population in Cold Diffuse Clouds

S. J. Gibson, H. Hirashita, A. C. Bell, M. E. Spraggs, A. Noriega-Crespo, S. Carey, W. T. Reach, & C. M. Brunt



- Dust important for H₂ formation
- Fit SEDs to get CDC dust content
- AKARI photometry are essential!
- Pilot study: Per-arm HISA cloud



Perseus HISA Complex ON-OFF Dust SED

